

# The Second Summer School on Representation in Artificial Intelligence (RinAI-2019)

June 6-13, 2019

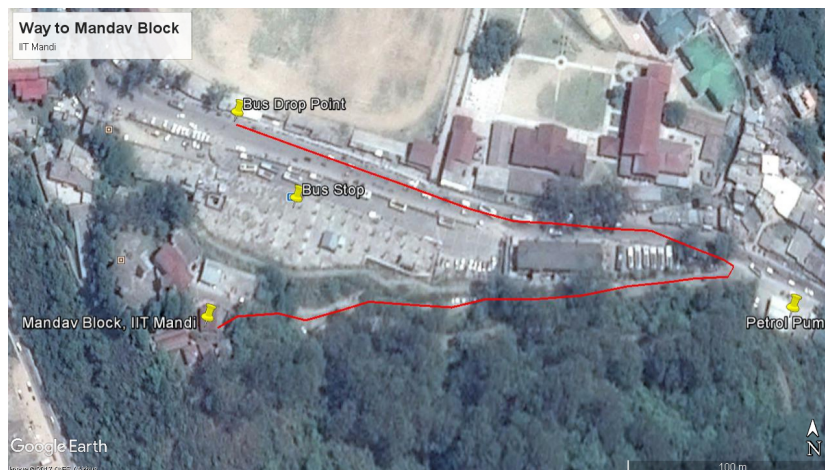
Venue: Conference center, North campus, IIT Mandi

**Welcome to the second summer school on Representation in AI, IIT Mandi.** The purpose of this document is to provide the necessary information for your visit.

## Reaching IIT Mandi

The IIT Mandi campus is located in the village of Kamand (South campus) and Salgi (North campus), which is about 18 km from Mandi town. The Institute runs a shuttle-bus service between the campus and Mandi town, one can catch this bus from Mandav block (don't confuse it with Mandav hospital). Please find the Institute vehicle schedule [here](#).

**IIT Mandav Block** (See Map) is situated just **above the main bus stand** in Mandi. This is a 10-minute walk from the bus stand. The path is fairly steep, so if you have luggage, it may be easier to hire an auto-rickshaw from the bus stand. The fare is about Rs.20/-.



If one happens to arrive early, before the shuttle service starts from the Mandav block, one can hire a taxi to North campus. Taxis are stationed outside Mandi main bus stand 24 x 7. The cost of a one-way trip to the IIT campus is about Rs. 600 to 700/-. Mandi bus stand has restroom facilities available.

## Availing accommodation and other facilities

On reaching North campus (Salgi), you should report to C.V. Raman Guest house (opposite to the check post, North campus). The accommodation has been arranged here. The receptionist will help you locate your room.

1. **Meals** [June 6 - June 13]: Breakfast, lunch and dinner will be served in the **Pine mess**, 2 minutes walk from the guest house, while high tea between sessions will be served in the conference center itself. Before June 6, one can avail the mess facilities on payment basis.
2. **Internet** Wireless connectivity is available in the guest house building. WiFi credentials will be provided to the participants along with the kit at the time of registration (June 6).

## Registration

The registration will start early at **08:30 - 09:00, June 6** in the Conference center, North campus.

Participants will be provided with an ID card, program kit and WiFi credentials here.

## General Information

The North campus, IIT Mandi has a couple of eateries and a stationery shop. There are a few small dhabas and shops outside the campus (about 1 km walk). The items available in these shops are limited, and for buying anything major (like clothes or footwear etc.) you need to go to Mandi town. We would recommend that you bring an umbrella and a set of firm shoes like sport shoes as we might take you out for a trek.

**Important Note:** The river Uhl, flows next to the campus. Participants are strongly discouraged from going to the river, as the currents can be swift, and the rocks slippery.

For further help/queries, you may contact:

Shikha Singh: +91-9936412942

Adnaan Nazir: +91-7006168185

Email: [rinai@iitmandi.ac.in](mailto:rinai@iitmandi.ac.in)